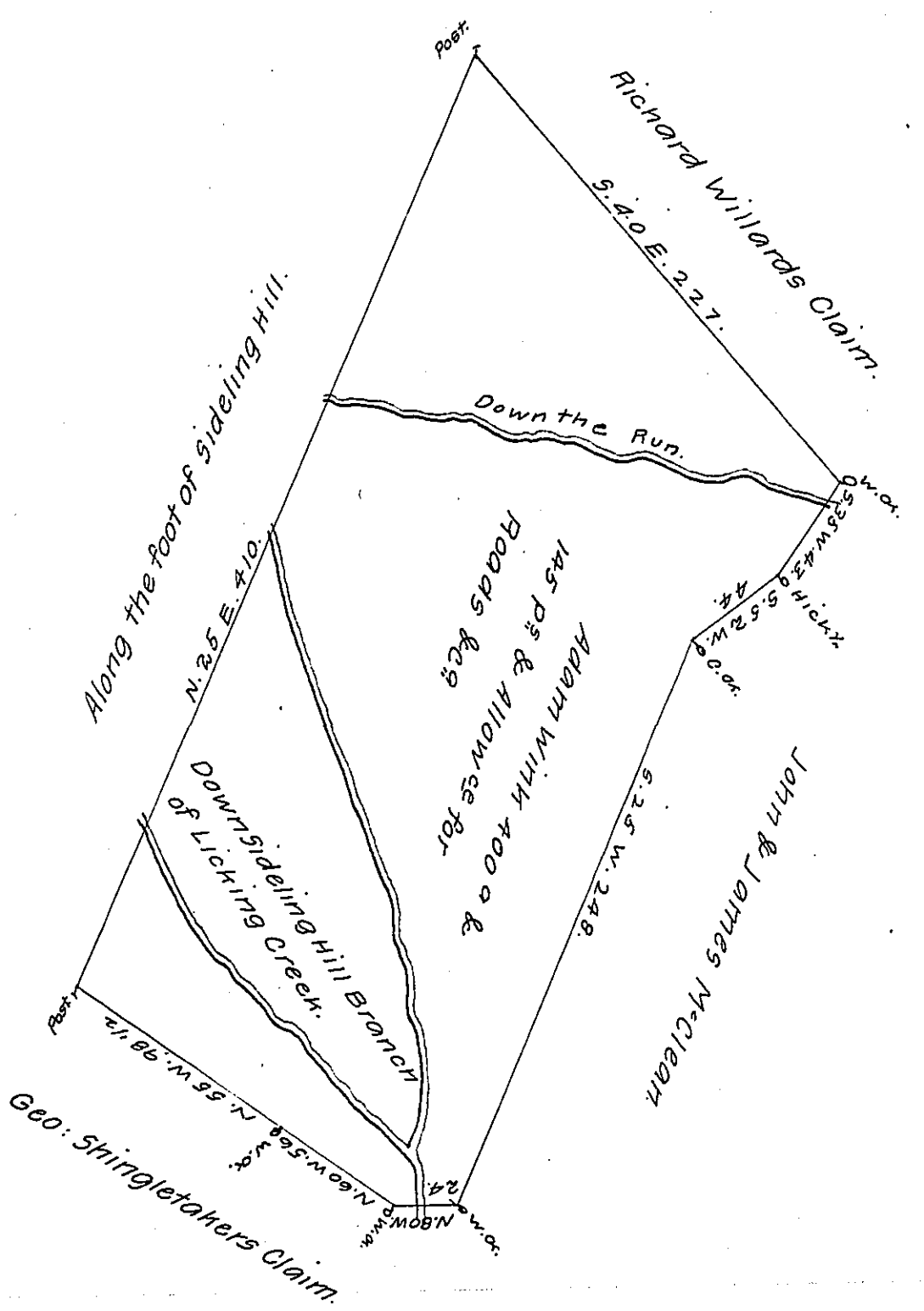


FORM NO 1.



A Draught of a Tract of Land situate in Belfast Township on the West Branch of Licking Creek (Commonly called Sideling Hill Branch) in the County of Bedford. Containing four hundred Acres & One hundred and forty five perches and the usual Allowance of six Per Cent for Roads surveyed for Adam Wink the 14th. Day of October 1785 In pursuance of a Warrant Dated May 11th 1785.

George Woods, D.S.

To: John Lukens, Esq. S.G.

IN TESTIMONY that the above is a copy of the original remaining on file in the Department of Internal Affairs of Pennsylvania, made conformably to an Act of Assembly approved the 16th day of February, 1833, I have hereunto set my Hand and caused the Seal of said Department to be affixed at Harrisburg, this tenth day of June 1907.

*Henry Howell*  
Secretary of Internal Affairs.